



DETECTION
Innovation and flexibility



INNOVATIVE

And economical

In order to avoid that the lamp remains lit on and consumes energy whereas nobody is using it, Sensation switches off automatically after 15 minutes if no motion is detected, thanks to a detector located under the head. Fitted with LED, Sensation is a lamp that consumes very little power.

FLEXIBILITY

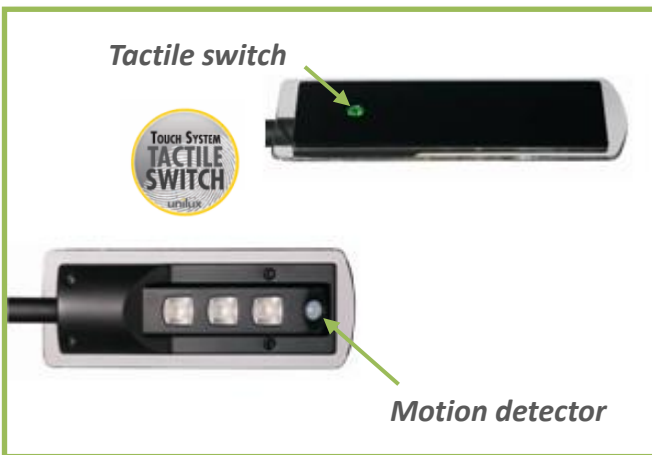
and design

Sensation has got a great adjustment possibility thanks to the 2 flexible articulations of its arm, which make its movements and its use easy. Head and base have been designed in a subtle way, they are made of transparent PMMA giving a contemporary style.

HIGH-PERFORMANCE

And ergonomic

Sensation is equipped with high-performance LED that consume little and last 40 years. The lamp is fitted with a lot of product advantages: among which the asymmetrical lighting for a better diffusion of the light on the work surface.



*"Sensation is a smart lamp that consumes little energy"
Fits any kind of desk*

Technical data



DIMMER TACTILE SWITCH

On the head / Dimming of the light intensity and memorization of the intensity adjustment

Motion detector under the head

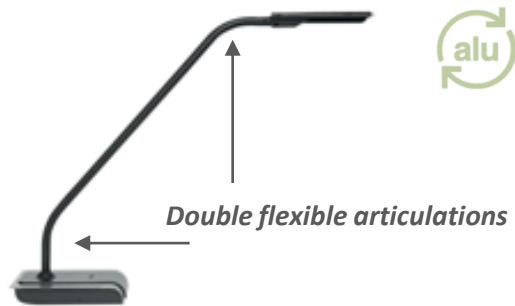
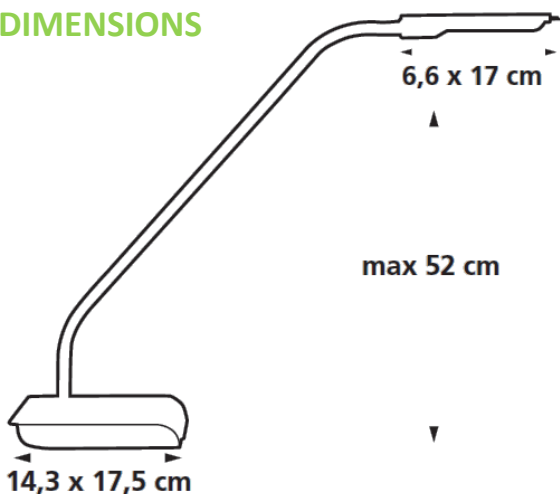
MOVEMENTS

2 flexible articulations : on the lower and upper part of the arm

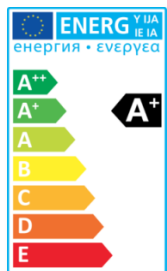
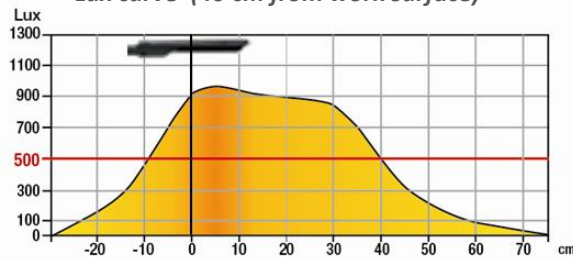
MATERIALS

PMMA, ABS and recyclable aluminium. Arm covered with a silicon sheat

DIMENSIONS



Lux curve (40 cm from work surface)



SOURCE

- LED built-in*, rated power 4,3 W

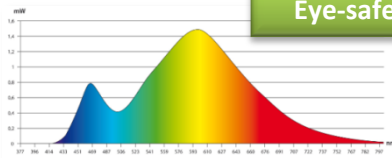
* Cannot be replaced

DRIVER : removable on plug

Lifetime:

40 years

SPECTRAL CURVE



Eye-safe

DIRECTIVES



SAP no.	Colour	Energy Consumption KW/1000h	Lumen	Lm/W*	Colour T° Kelvin	CRI	Source's lifetime**	Warranty (except for driver)	Origin	Net weight Kg	EAN code
100340449	Black	5,5	420	93	3000	82	40 years	5 years		2,32	3595560015573

* Luminous efficacy based on the rated power of the source

** Calculated on the basis of a 1000 hours use of the lamp per year